
Sample Survey Report

Prepared for: Sample
Prepared by: NetGemini, Inc.
Location: U.S.
Time of Survey: Sample



Table of Contents

- 1 Overall Coverage Report by AP
 - 1.1 Access Points Information
 - 1.2 Signal Distribution
 - 1.3 Noise Distribution
 - 1.4 Signal/Noise Distribution
 - 1.5 Maximum Predictive PHY Data Rate Downlink Distribution
 - 1.6 Operating Mode Information Distribution
 - 1.7 20/40/80/160 MHz Channel Width Distribution
 - 1.8 Wi-Fi 4 Tx MCS Index Information Distribution
 - 1.9 Wi-Fi 4 Rx MCS Index Information Distribution
 - 1.10 Wi-Fi 5 Tx MCS Index Information Distribution
 - 1.11 Wi-Fi 5 Rx MCS Index Information Distribution
 - 1.12 Wi-Fi 6 Tx MCS Index Information Distribution
 - 1.13 Wi-Fi 6 Rx MCS Index Information Distribution
- 2 AP Interference Report
 - 2.1 Channel Interference

1 Overall Coverage Report by AP

1.1 Access Points Information

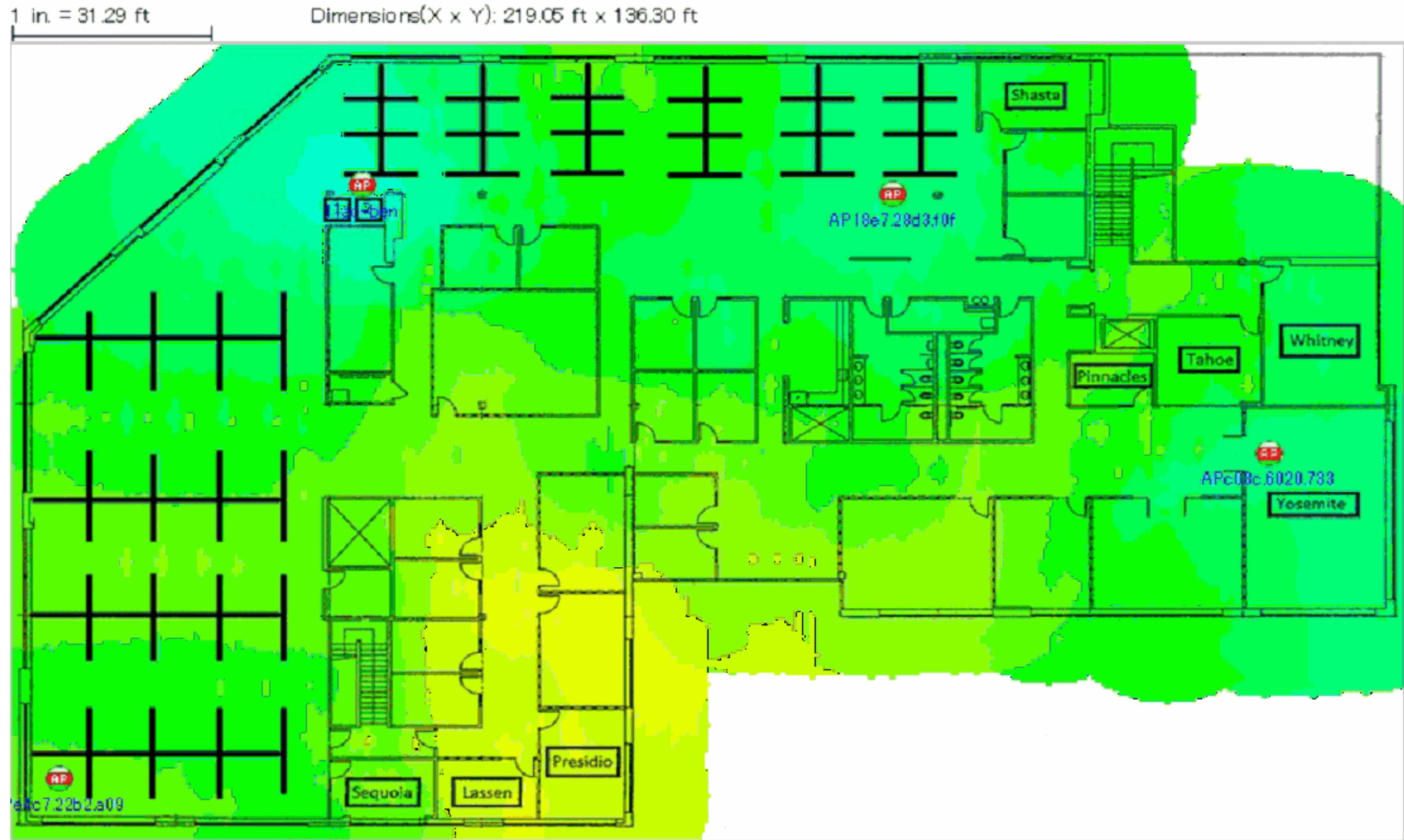
AP Name	Media Type	MAC Address	Channel	SSID	Power,mW	Max Signal
ACL						
11ac-ben	Wi-Fi 4-5GHz	50:17:FF:EB:51:7F	CH (108,1)	Cisco11ac	100	-33
AP18e7.28d3.f0f	Wi-Fi 5-5GHz	74:26:AC:14:21:AF	CH (36)	Cisco11ac	100	-40
APc08c.6020.733	Wi-Fi 5-5GHz	50:17:FF:B2:D1:7F	CH (36 P, 40MHz, 36-40)	Cisco11ac	100	-42
Cisco-24:A4:A7	Wi-Fi 5-5GHz	34:DB:FD:24:A4:A7	CH (36 P, 80MHz, 36-48)	Cisco11ac	100	-52

Number of AP: 4

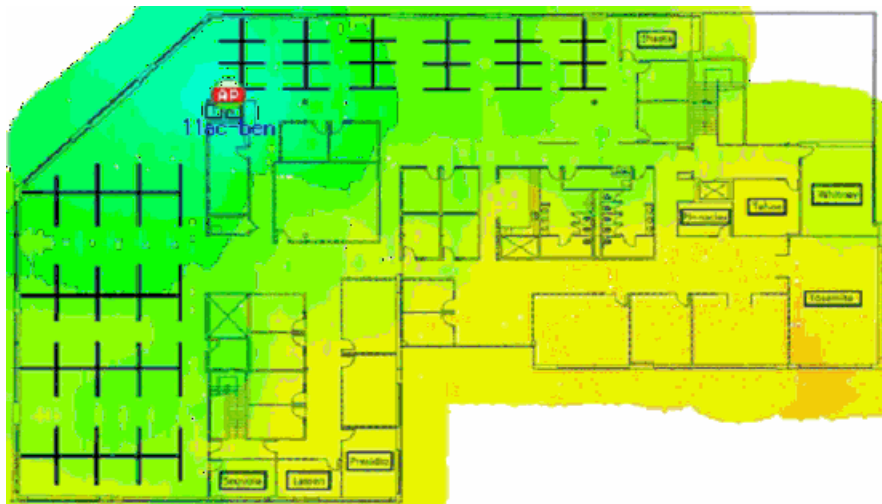
Total APs: 4

Total BSSIDs: 4

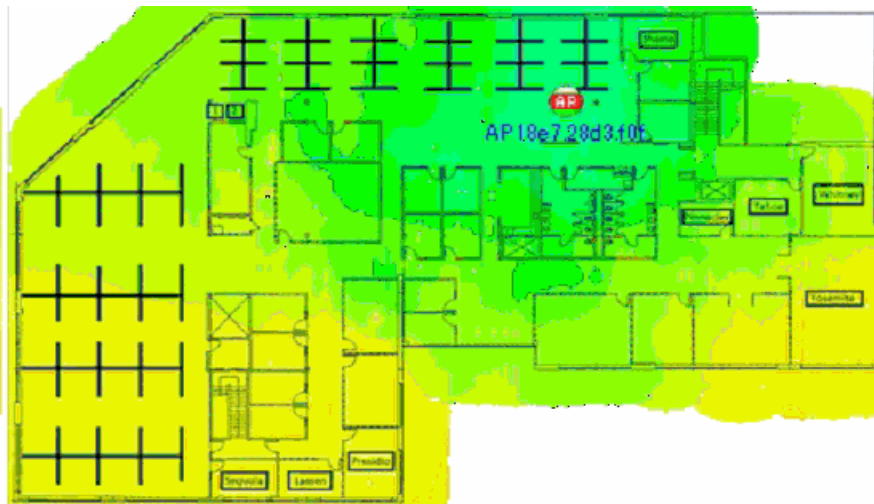
1.2 Signal Distribution



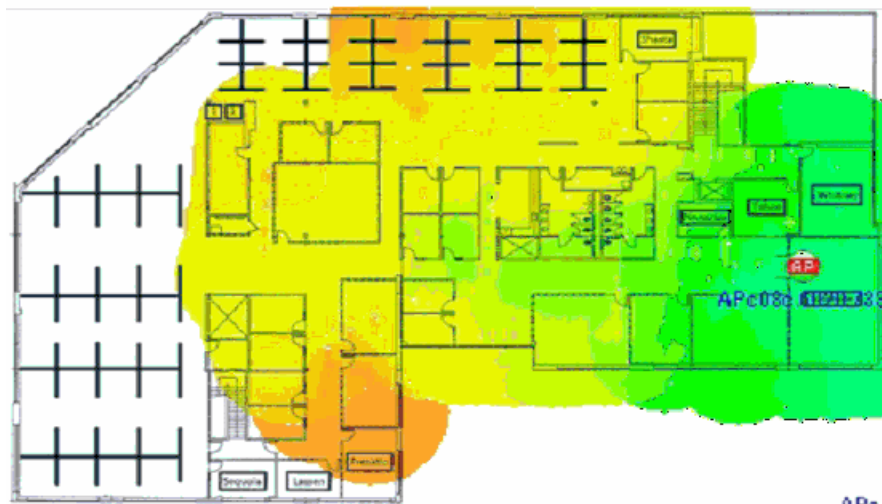
Individual Signal Distribution



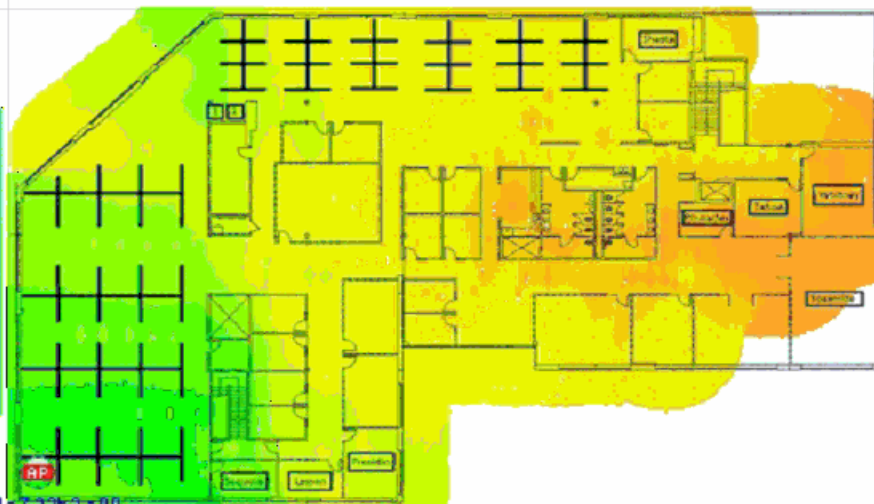
11ac-ben [CH (108),Cisco11ac,-33]



AP18e7.28d3.f0f [CH (36),Cisco11ac,-40]



APc08c.6020.733 [CH (36 P, 40MHz, 36-40),Cisco11ac,-42]



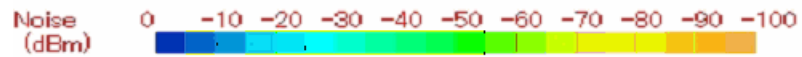
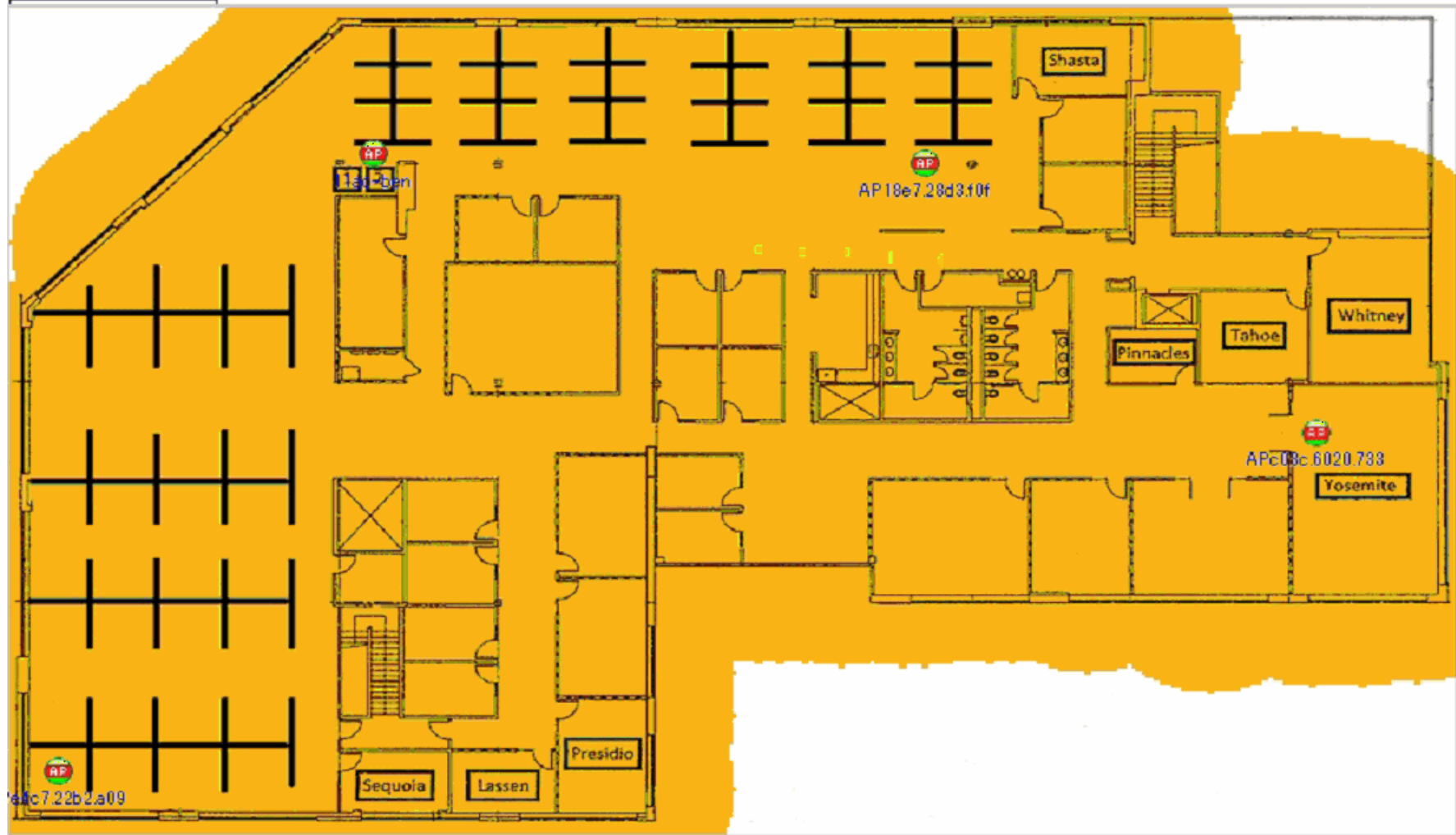
APe07.2262.a00
Cisco-24:A4:A7 [CH (36 P, 80MHz, 36-48),Cisco11ac,-52]



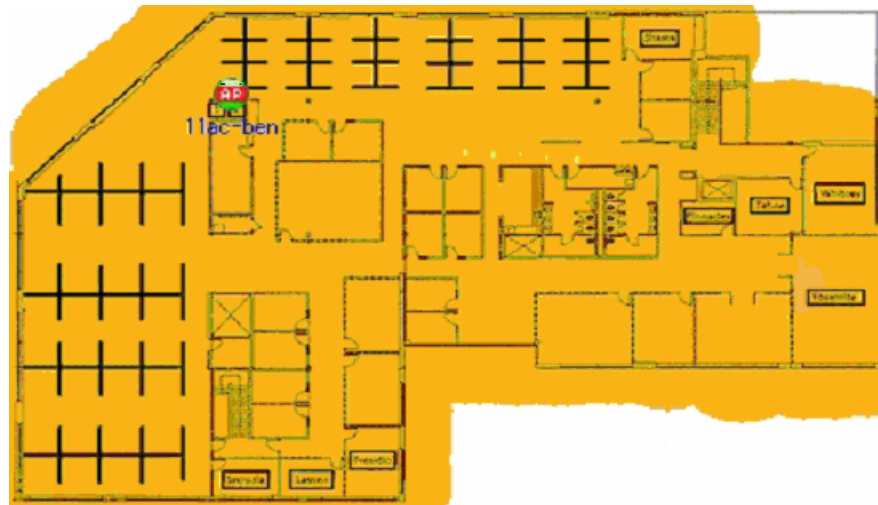
1.3 Noise Distribution

1 in. = 31.29 ft

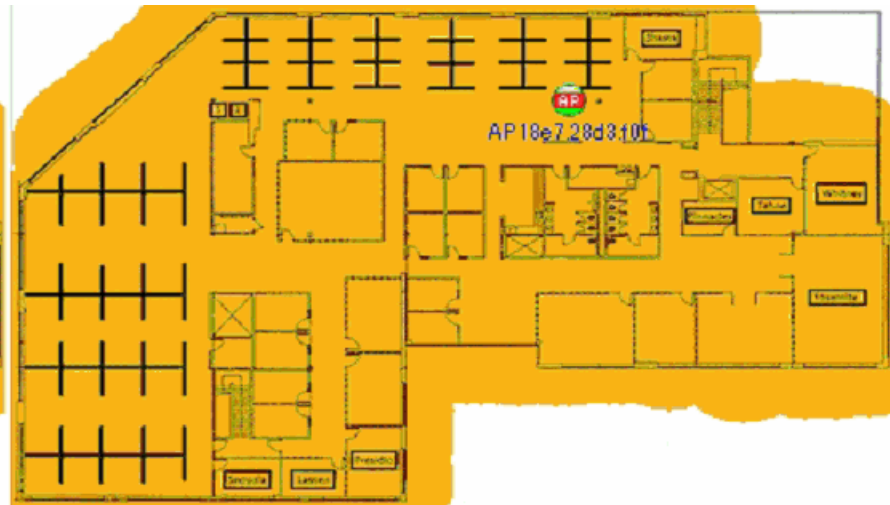
Dimensions(X x Y): 219.05 ft x 136.30 ft



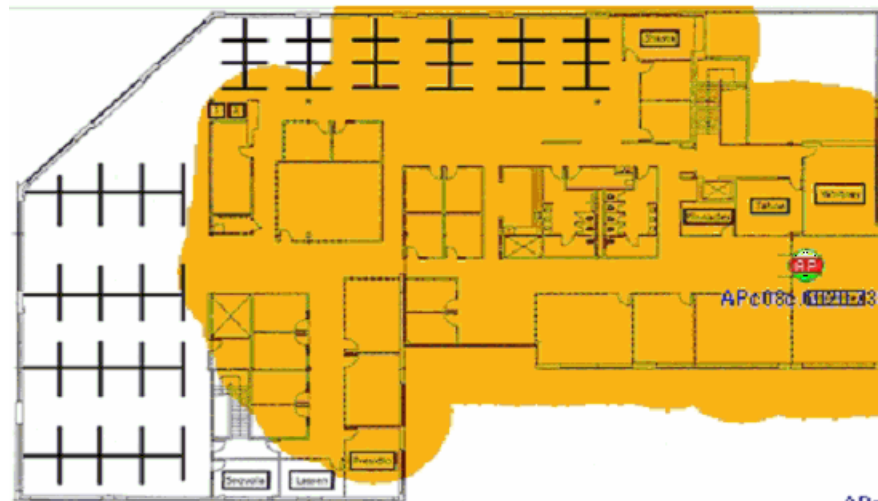
Individual Noise Distribution



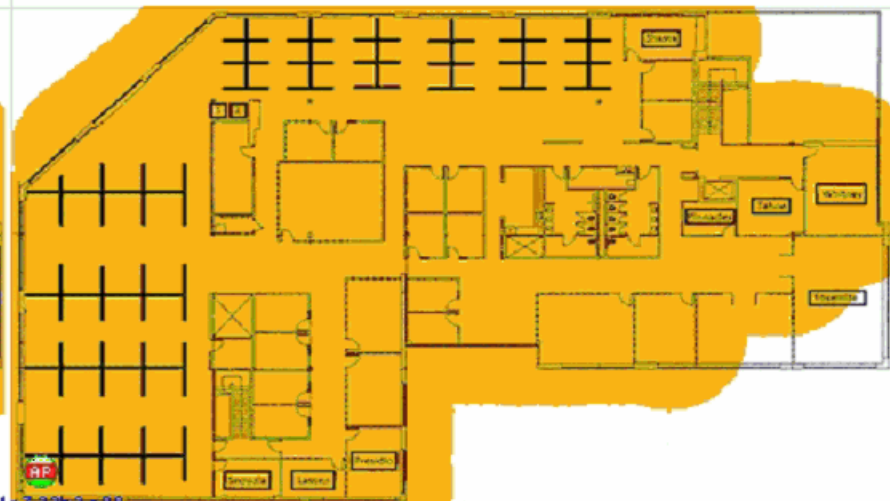
11ac-ben [CH (108),Cisco11ac,-33]



AP18e7.28d3.f0f [CH (36),Cisco11ac,-40]



APc08c.6020.733 [CH (36 P, 40MHz, 36-40),Cisco11ac,-42]



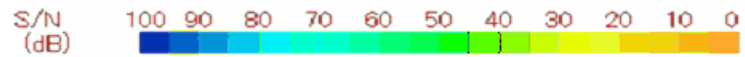
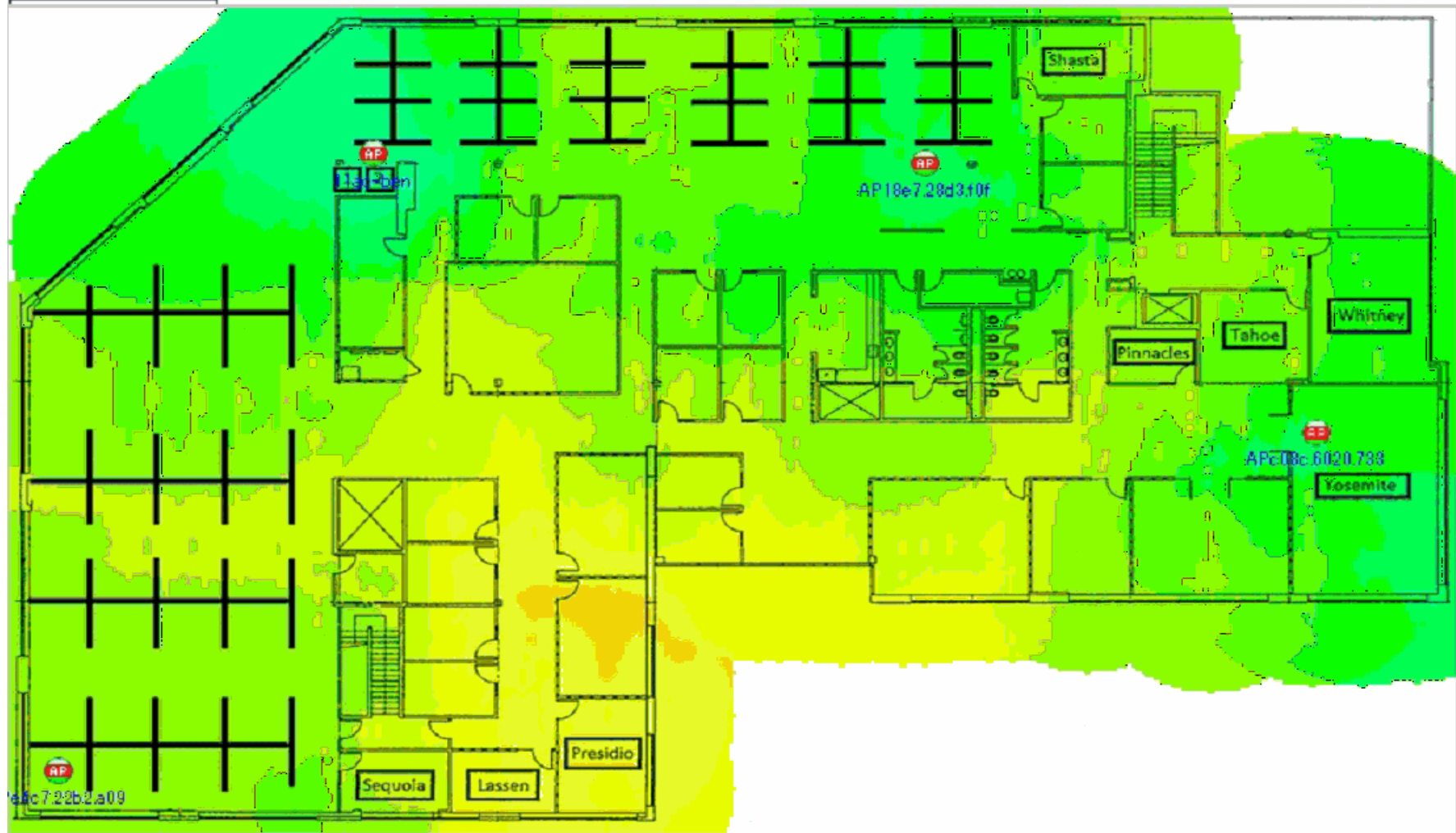
APc07.22b2.a09 [CH (36 P, 80MHz, 36-48),Cisco11ac,-52]



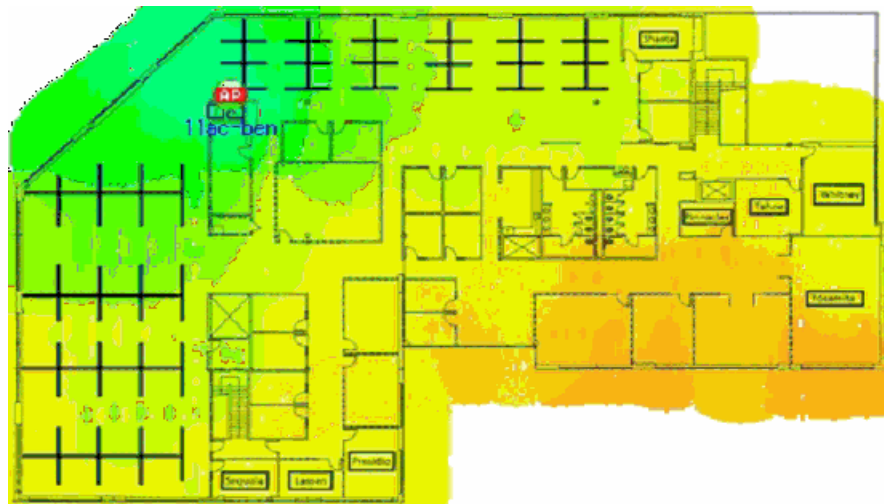
1.4 Signal/Noise Distribution

1 in. = 31.29 ft

Dimensions(X x Y): 219.05 ft x 136.30 ft



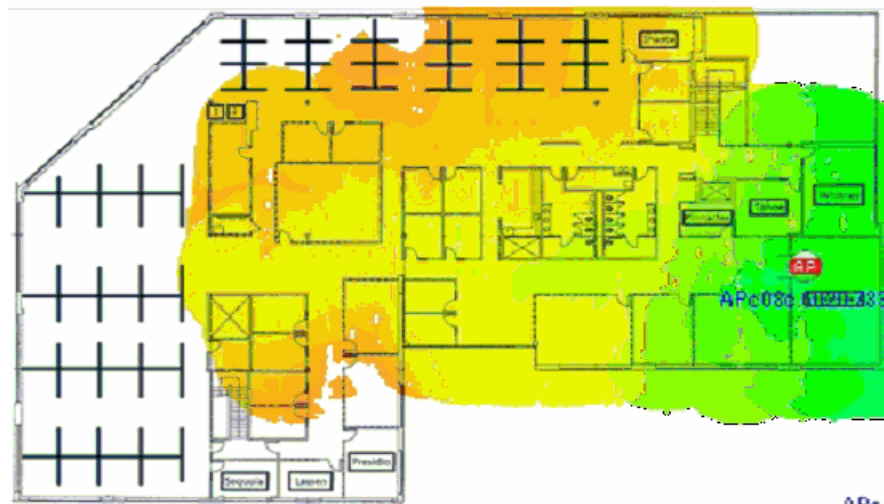
Individual Signal/Noise Distribution



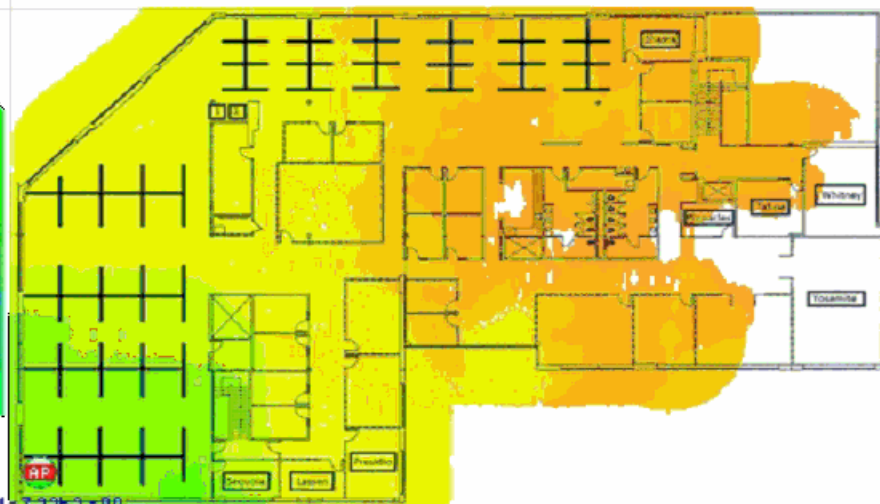
11ac-ben [CH (108),Cisco11ac,-33]



AP18e7.28d3.f0f [CH (36),Cisco11ac,-40]



APc08c.6020.733 [CH (36 P, 40MHz, 36-40),Cisco11ac,-42]



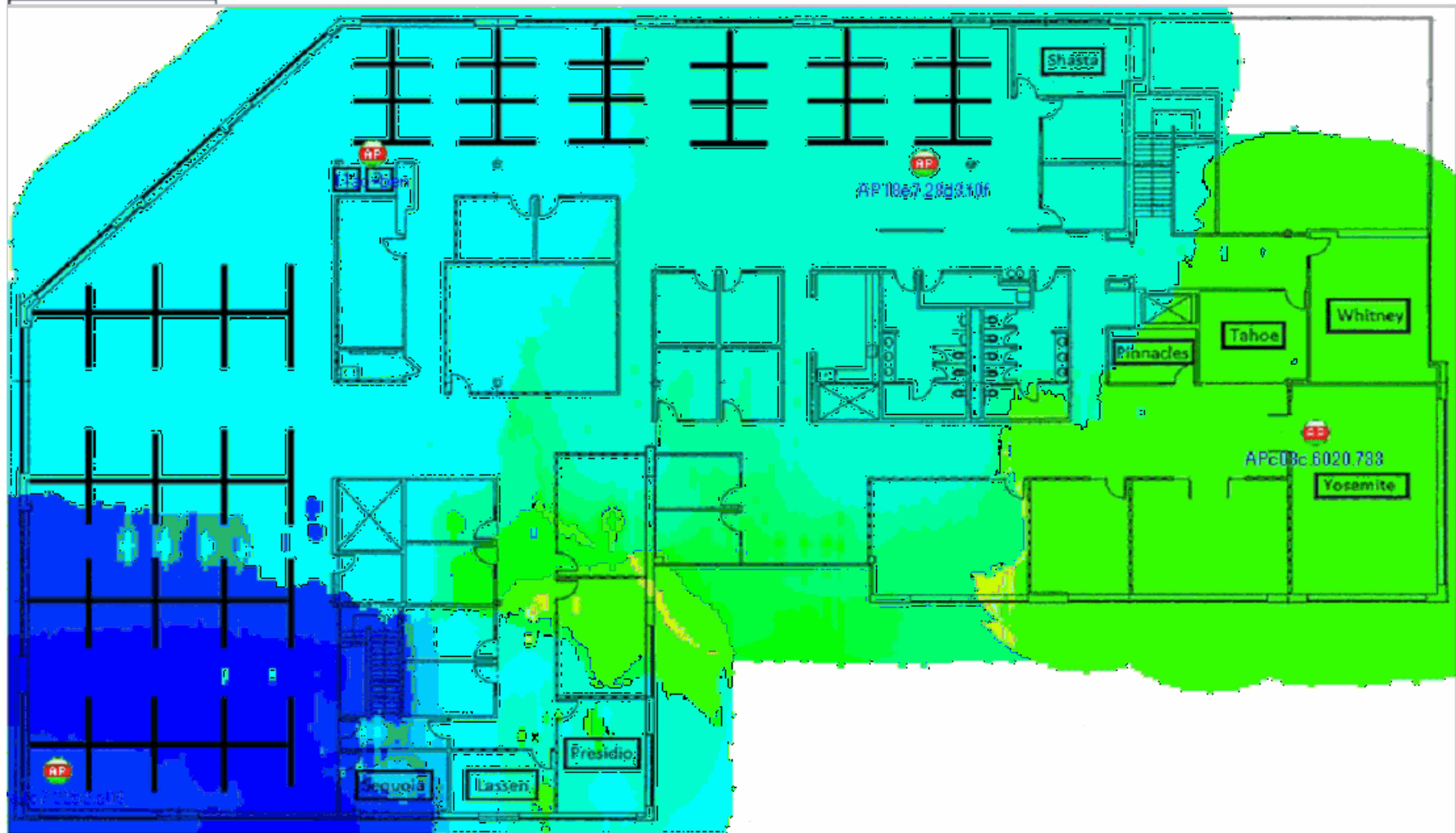
APc7.2262.a09 [CH (36 P, 80MHz, 36-48),Cisco11ac,-52]



1.5 Maximum Predictive PHY Data Rate Downlink Distribution

1 in. = 31.29 ft

Dimensions(X x Y): 219.05 ft x 136.30 ft



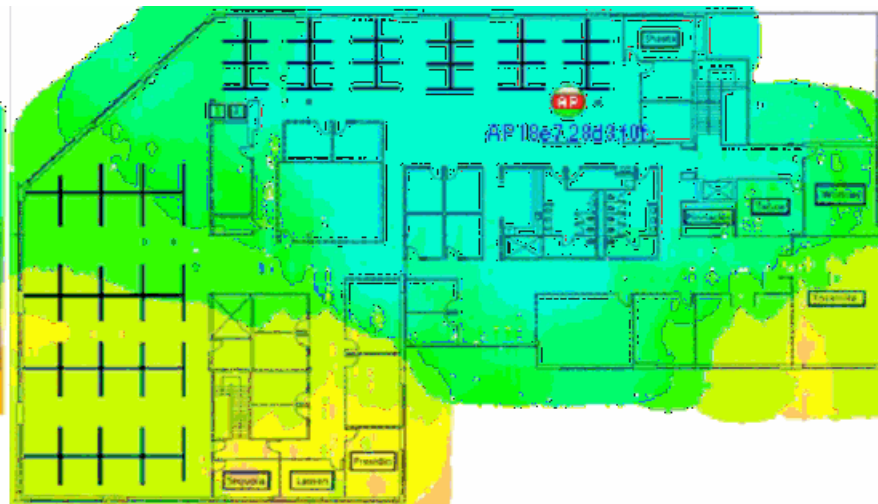
PHY Data Rate (Mbps)



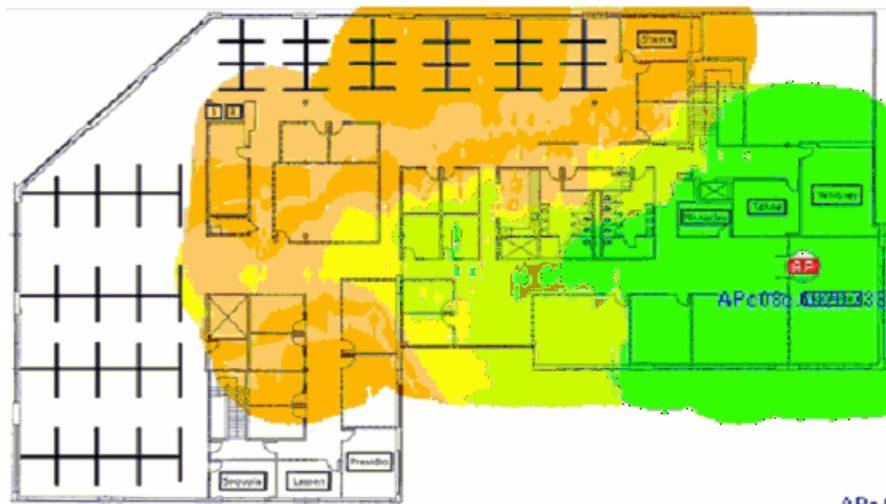
Individual Predictive PHY Data Rate (Downlink) Distribution



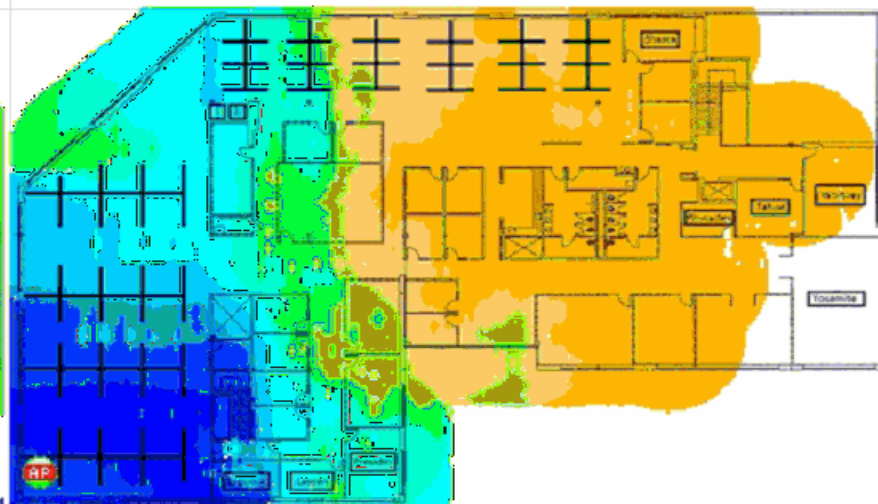
11ac-ben [CH (108),Cisco11ac,-33]



AP18e7.28d3.f0f [CH (36),Cisco11ac,-40]



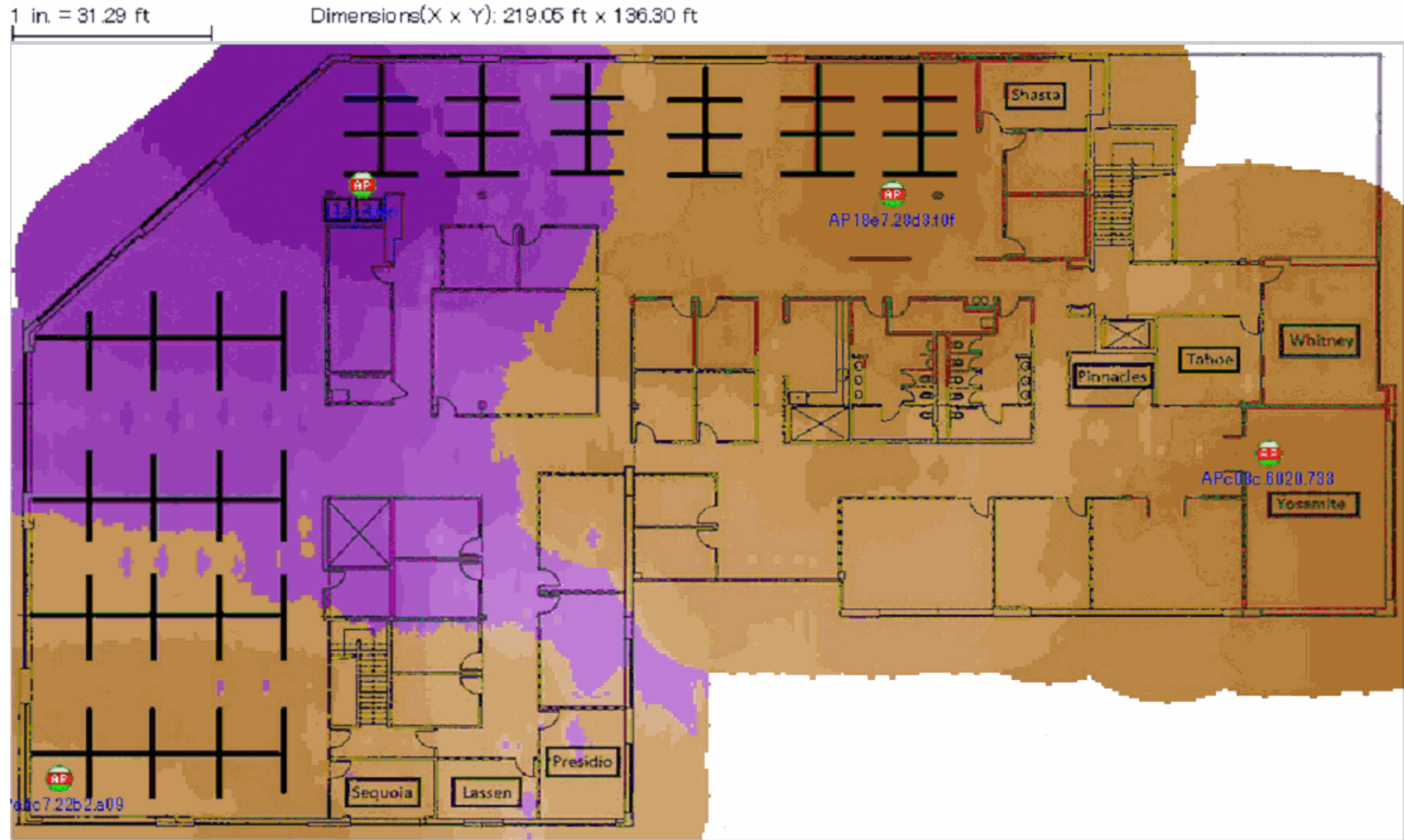
APc08c.6020.733 [CH (36 P, 40MHz, 36-40),Cisco11ac,-42]



AP Cisco-24:A4:A7 [CH (36 P, 80MHz, 36-48),Cisco11ac,-52]



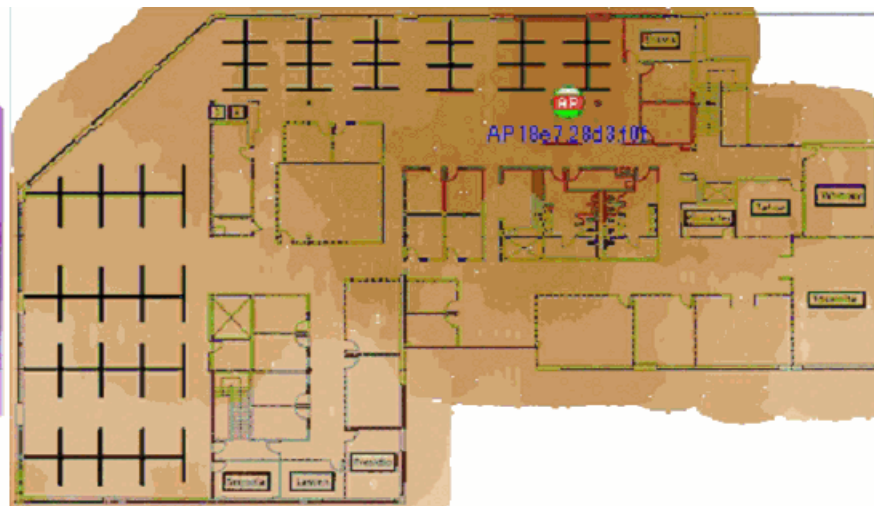
1.6 Operating Mode Information Distribution



Individual Operating Mode Distribution



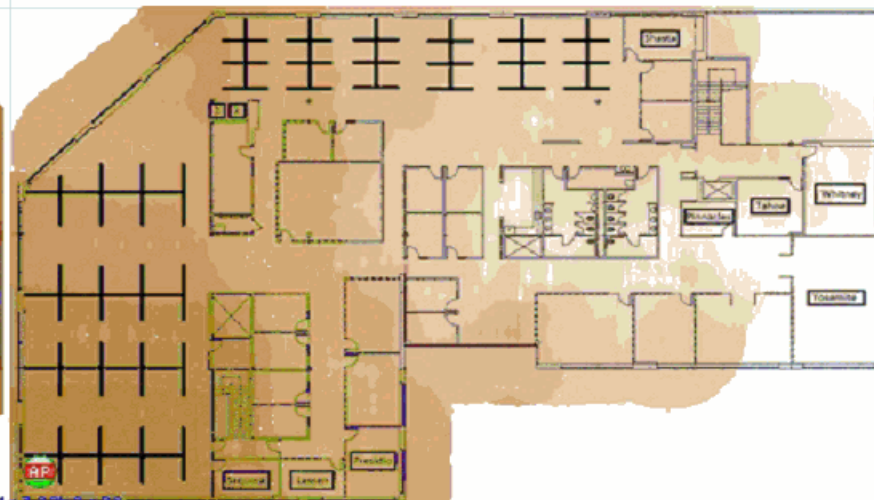
11ac-ben [CH (108),Cisco11ac,-33]



AP18e7.28d3.f0f [CH (36),Cisco11ac,-40]



APc08c.6020.733 [CH (36 P, 40MHz, 36-40),Cisco11ac,-42]



Cisco-24:A4:A7 [CH (36 P, 80MHz, 36-48),Cisco11ac,-52]

Operating Mode
Legacy Mixed HT Mixed VHT Mixed HE Greenfield HT/HE

1.7 20/40/80/160 MHz Channel Width Distribution

1 in. = 31.29 ft

Dimensions(X x Y): 219.05 ft x 136.30 ft



Channel Width

- 20 MHz (Legacy)
- 20 MHz (Wi-Fi 4/5/6 HT)
- 40 MHz (Wi-Fi 4/5/6 HT)
- 80 MHz (Wi-Fi 5/6 VHT/HE)
- 160 MHz (Wi-Fi 5/6 VHT/HE)

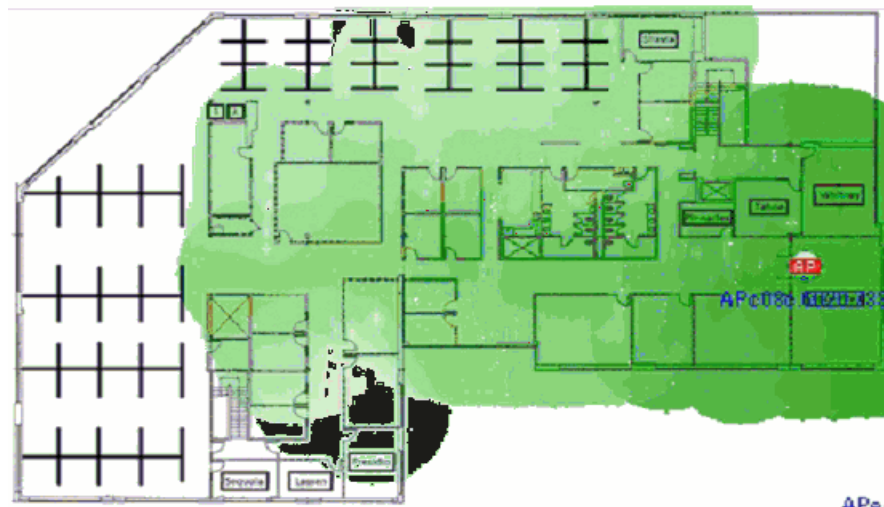
Individual 20/40/80/160 MHz Channel Width Distribution



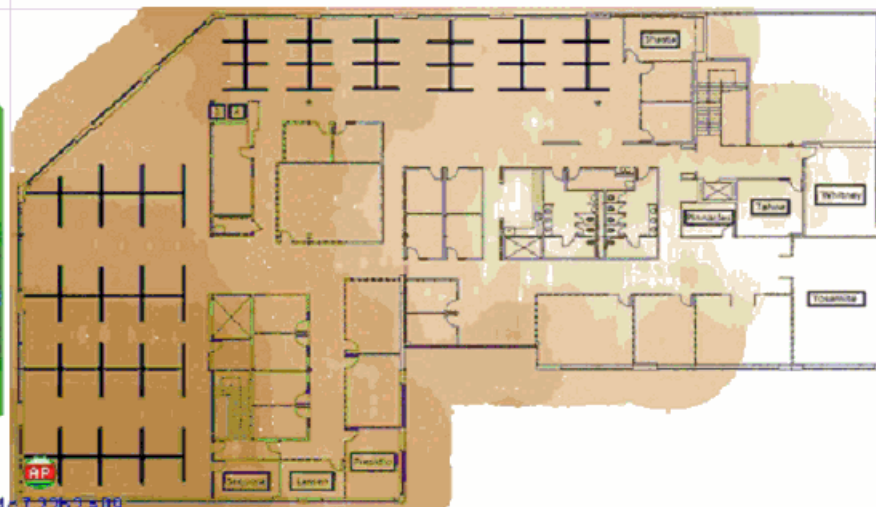
11ac-ben [CH (108),Cisco11ac,-33]



AP18e7.28d3.f0f [CH (36),Cisco11ac,-40]



APc08c.6020.733 [CH (36 P, 40MHz, 36-40),Cisco11ac,-42]



AP4c7.22b2.509 [CH (36 P, 80MHz, 36-48),Cisco11ac,-52]

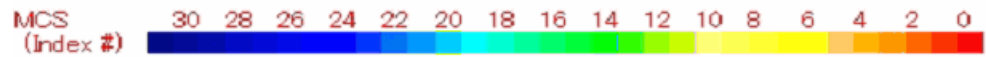
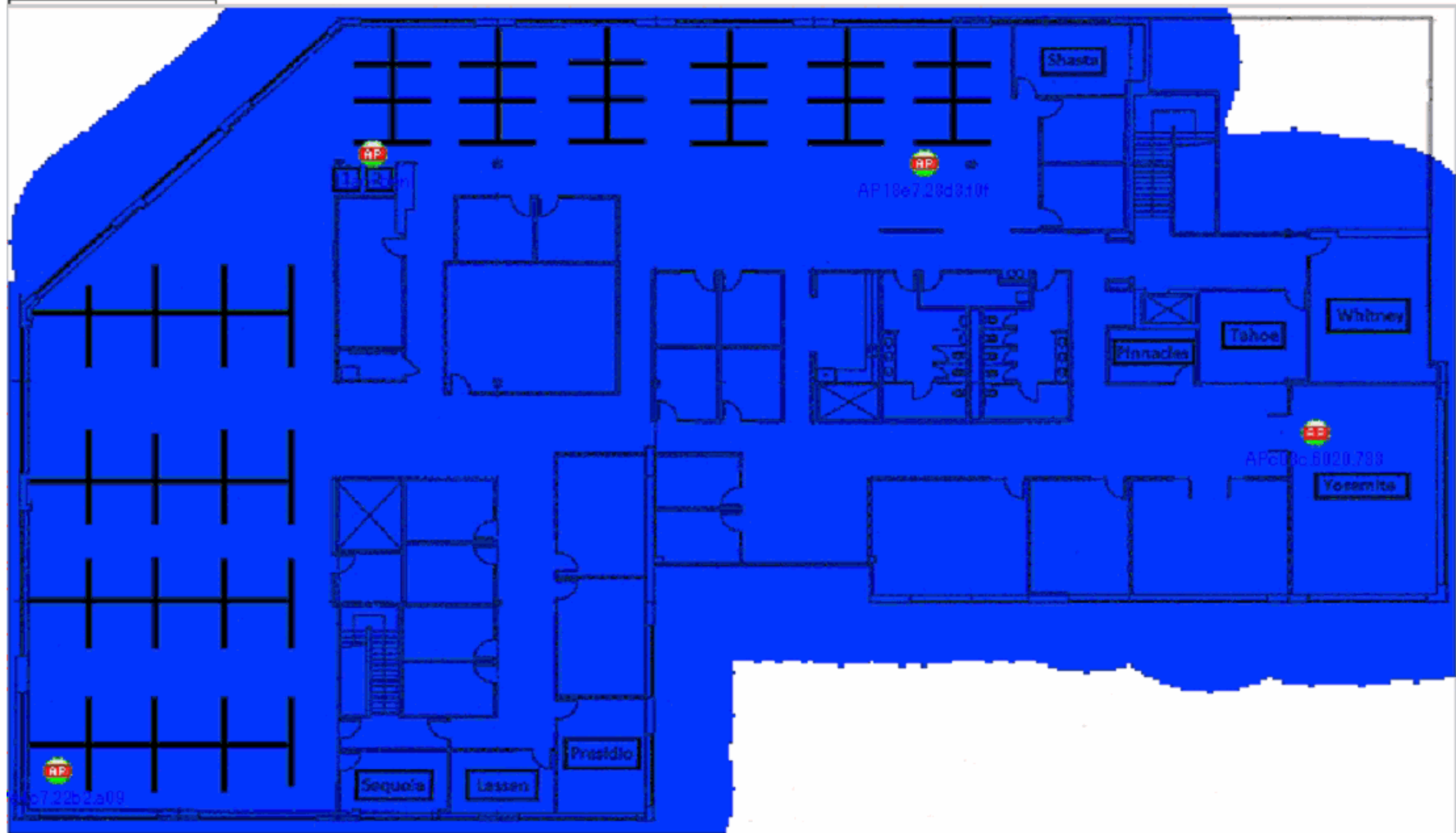
Channel Width

- 20 MHz (Legacy)
- 20 MHz (Wi-Fi 4/5/6 HT)
- 40 MHz (Wi-Fi 4/5/6 HT)
- 80 MHz (Wi-Fi 5/6 VHT/HE)
- 160 MHz (Wi-Fi 5/6 VHT/HE)

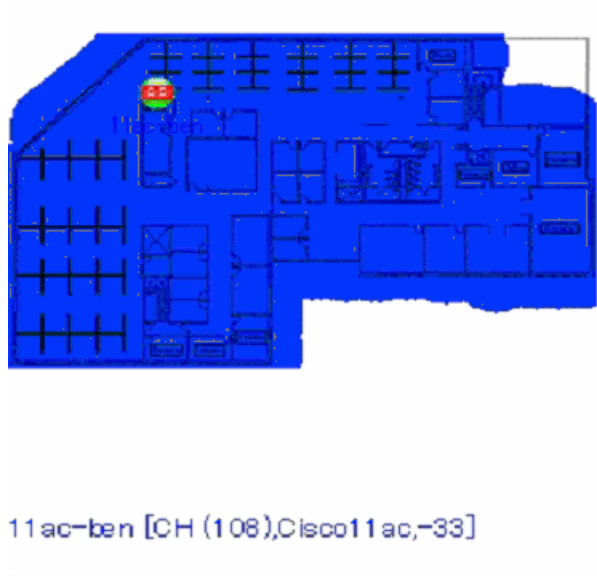
1.8 Wi-Fi 4 Tx MCS Index Information Distribution

1 in. = 31.29 ft

Dimensions(X x Y): 219.05 ft x 136.30 ft



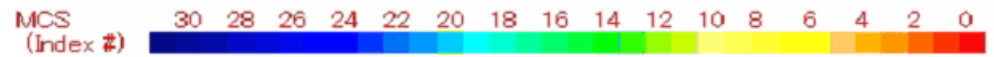
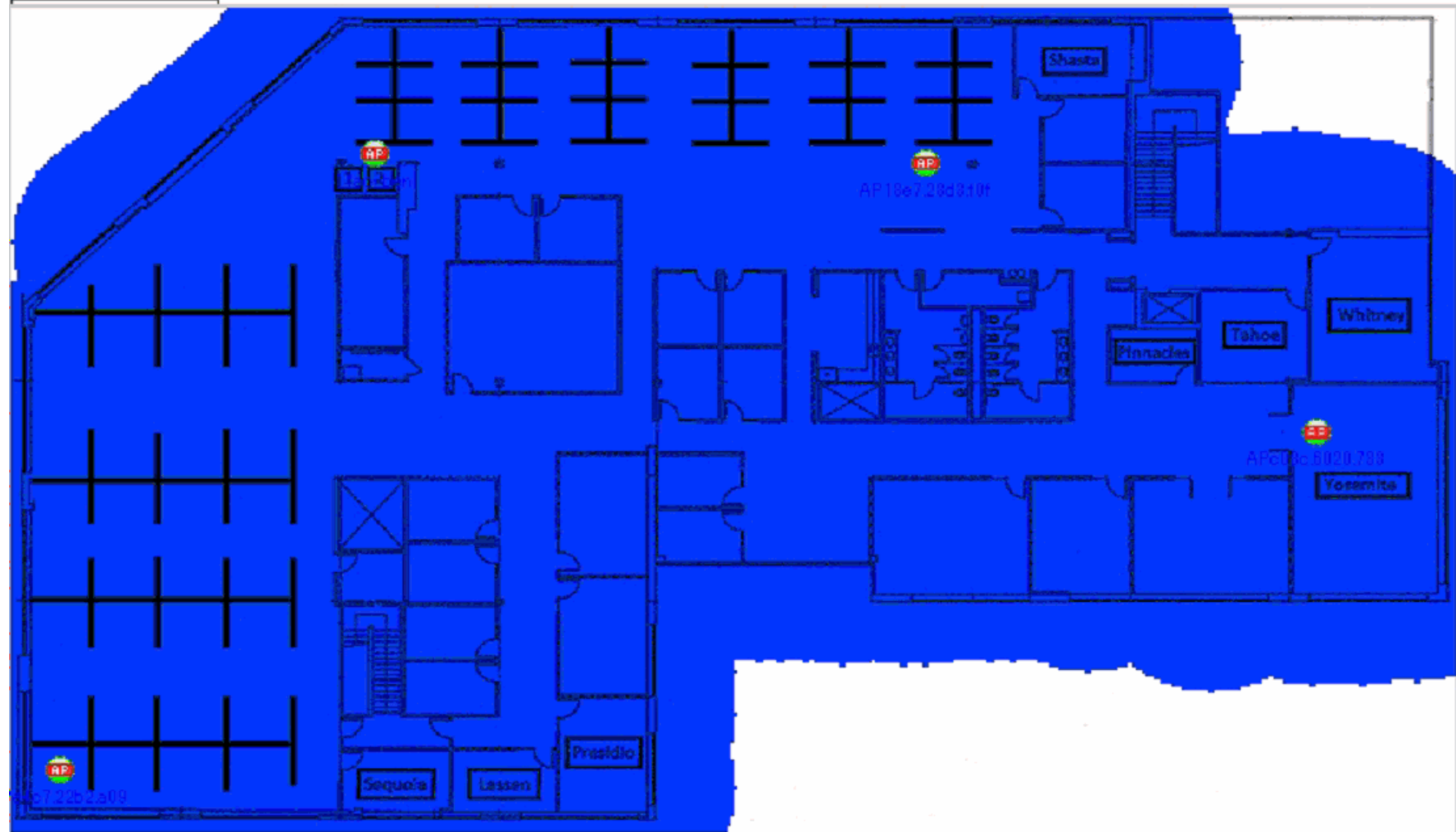
Individual Wi-Fi 4 Max MCS (AP Tx) Distribution



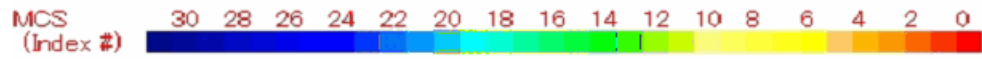
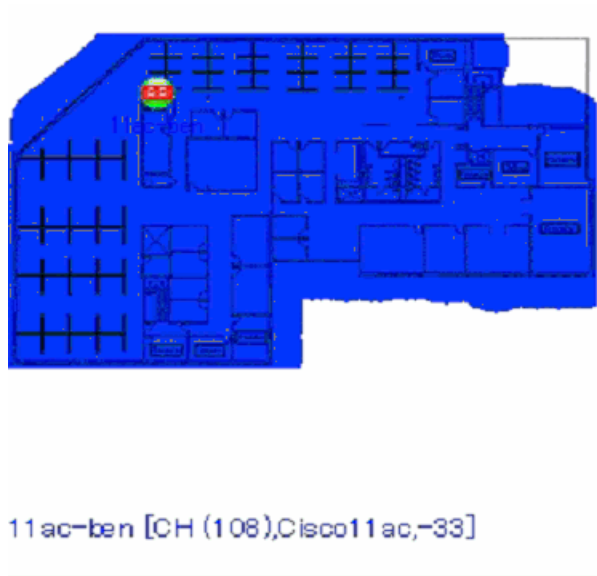
1.9 Wi-Fi 4 Rx MCS Index Information Distribution

1 in. = 31.29 ft

Dimensions(X x Y): 219.05 ft x 136.30 ft



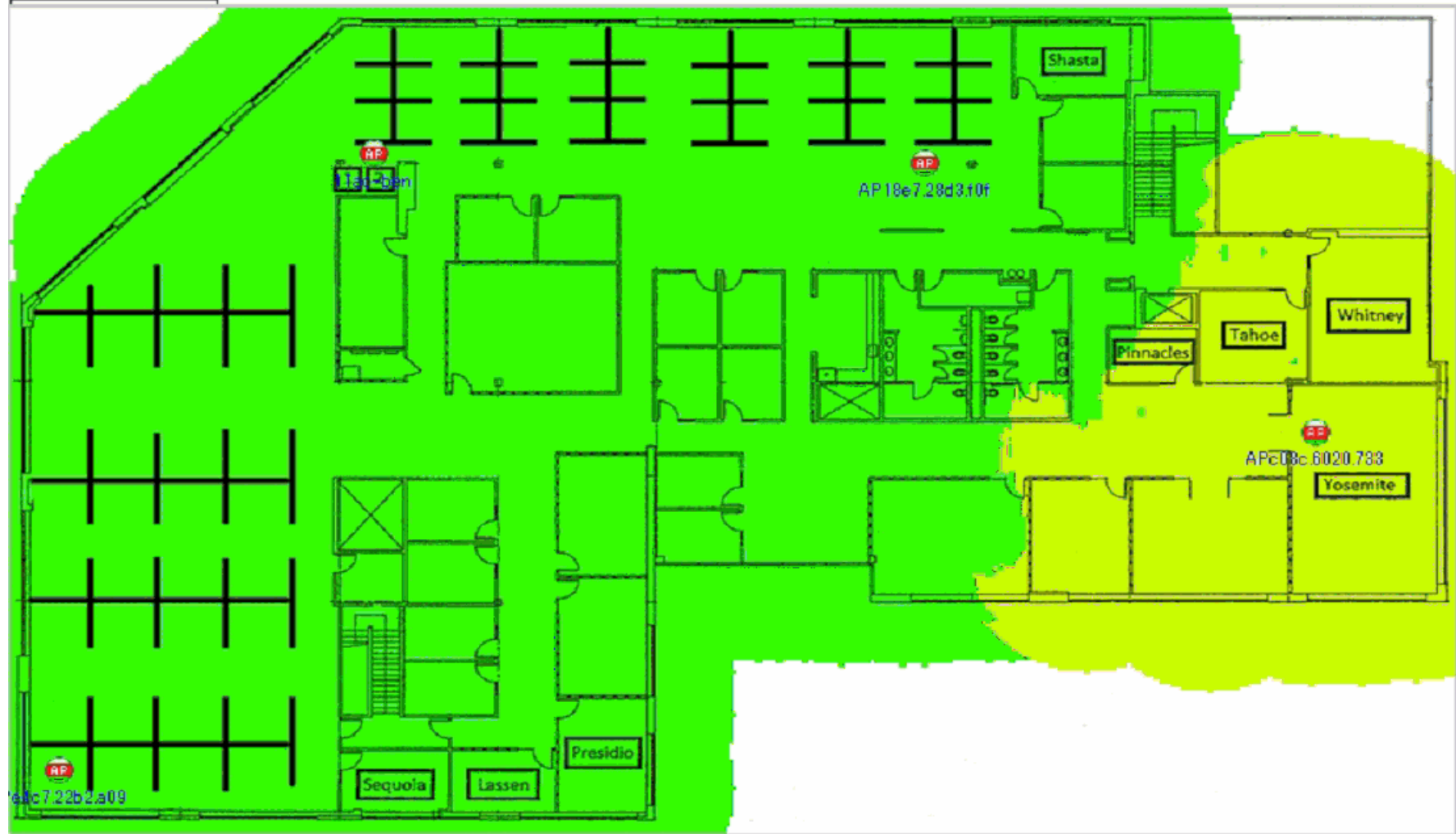
Individual Wi-Fi 4 Max MCS (AP Rx) Distribution



1.10 Wi-Fi 5 Tx MCS Index Information Distribution

1 in. = 31.29 ft

Dimensions(X x Y): 219.05 ft x 136.30 ft



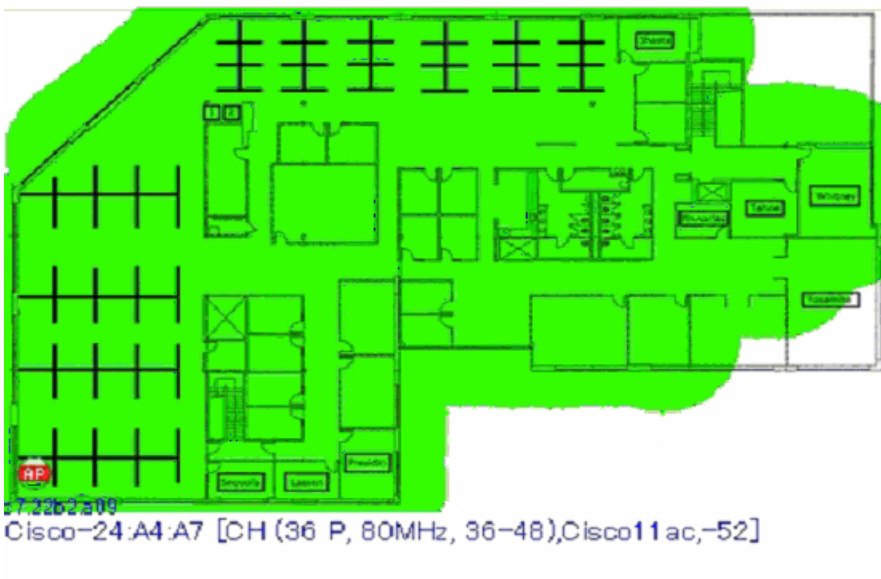
Individual Wi-Fi 5 Max MCS (AP Tx) Distribution



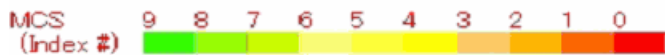
AP18e7.28d3.f0f [CH (36),Cisco11ac,-40]



APc08c.6020.733 [CH (36 P, 40MHz, 36-40),Cisco11ac,-42]



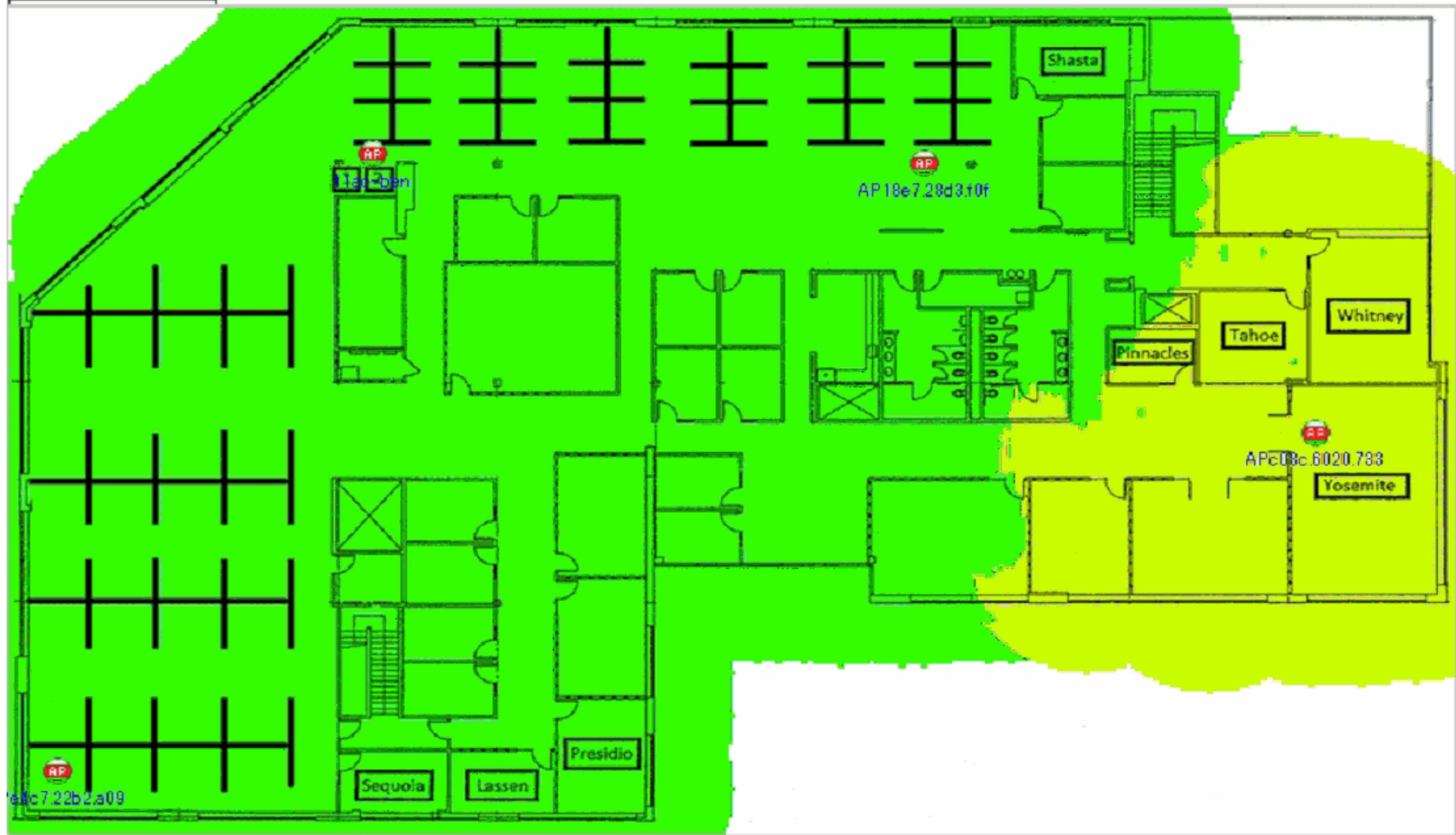
Cisco-24:A4:A7 [CH (36 P, 80MHz, 36-48),Cisco11ac,-52]



1.11 Wi-Fi 5 Rx MCS Index Information Distribution

1 in. = 31.29 ft

Dimensions(X x Y): 219.05 ft x 136.30 ft

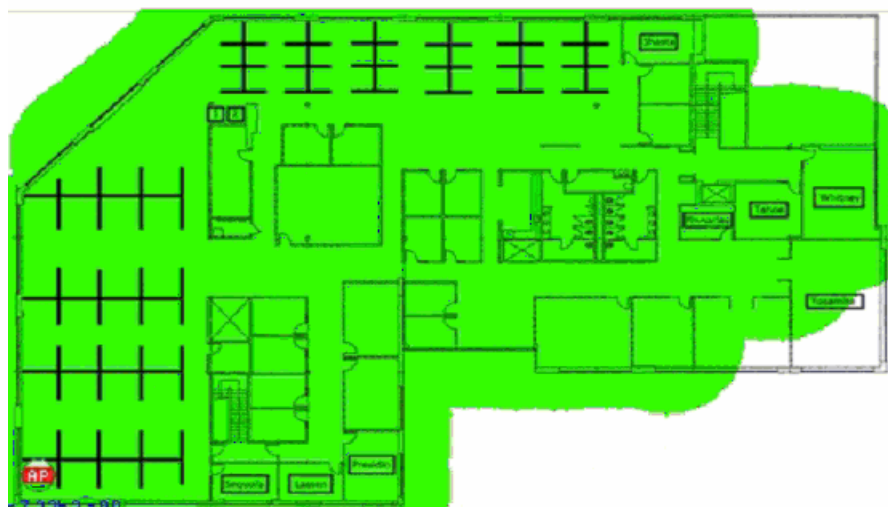


Individual Wi-Fi 5 Max MCS (AP Rx) Distribution

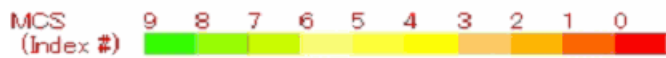


AP18e7.28d3.f0f [CH (36),Cisco11ac,-40]

APc08c.6020.733 [CH (36 P, 40MHz, 36-40),Cisco11ac,-42]



Cisco-24:A4:A7 [CH (36 P, 80MHz, 36-48),Cisco11ac,-52]



1.12 Wi-Fi 6 Tx MCS Index Information Distribution

1 in. = 31.29 ft

Dimensions(X x Y): 219.05 ft x 136.30 ft



1.13 Wi-Fi 6 Rx MCS Index Information Distribution

1 in. = 31.29 ft

Dimensions(X x Y): 219.05 ft x 136.30 ft



2 AP Interference Report

2.1 Channel Interference

1 in. = 31.29 ft

Dimensions(X x Y): 219.05 ft x 136.30 ft

